

Job profile

Service and job specific context statement

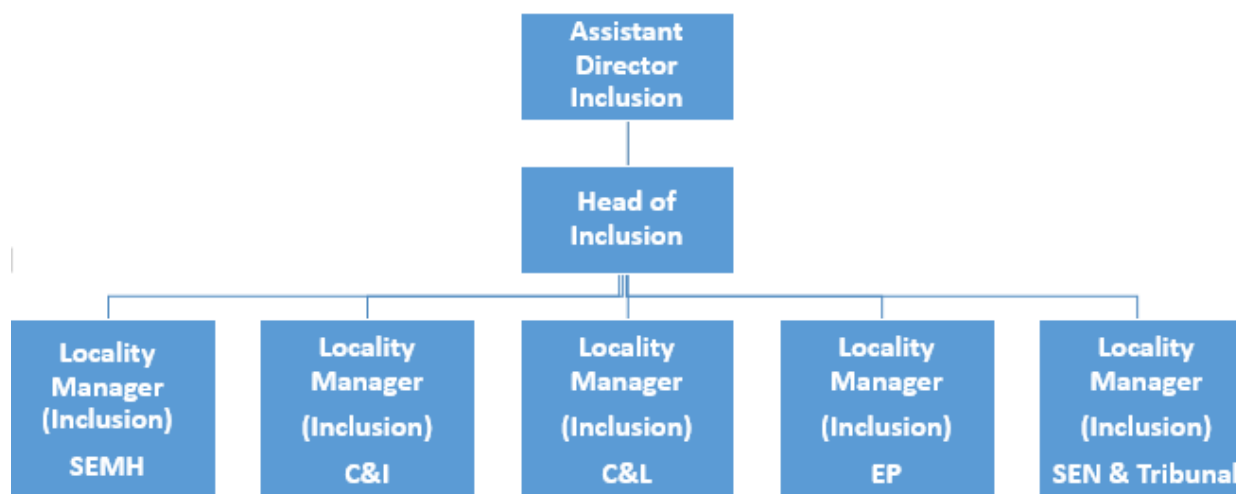
Directorate:	Children and Young People's Service
Service:	Inclusion
Post title:	Locality Manager Inclusion (with Cognition and Learning/Early Identification Specialism)
Grade:	SM1
Responsible to:	Head of Inclusion
Staff managed:	Manages a team of specialist professionals
Date of issue:	September 2021
Job family:	SM - Senior Management

Job context

- The legislative framework for SEND changed as a result of the Children and Families Act 2014. The changes were significant in terms of extending the age range covered by the legislation to 0-25 years and introduced enhanced responsibility for engagement with parents/carers and children and young people to shape developments at both strategic and individual level. There is also increased emphasis on key partners including LA, education providers and health to work collaboratively to ensure the outcomes for children and young people are maximised. A new Ofsted framework was introduced in 2016 to monitor the performance of local areas in terms of SEND and compliance with the requirements of the new Code of Practice.
- The strategic direction for the development of SEND in NY is underpinned by a strategic plan for SEND which includes developments to strengthen collaboration and decision making at locality level, the creation of local multidisciplinary SEND teams together with the reshaping of the continuum of educational provision for 0-25 year olds with SEND.

Structure

Job profile



Job Description

Job purpose

- The postholder will be responsible for establishing strong collaborative approaches across all stakeholders to transform approaches in inclusions and ensuring a strong culture of inclusion and resilience in meeting the needs of children and young people with additional needs.
- Strategic lead across the county for Cognition and Learning and Early Identification of SEND ensuring robust planning for further development to improve outcomes within this field
- Ensuring the SEND commissioned services are delivered within required standards and provide high quality and cost effective provision for children and young people.

Job profile

Operational management

- Professional supervision of Cognition and Learning and Early Identification across locality based multi-disciplinary hubs ensuring up to date and informed practices to support children and young people.
 - Lead on the analysis of performance of stakeholders within the allocated locality in terms of SEND and Inclusion and the identification of need in the area.
 - Significant contribution to the quality assurance monitoring of commissioned provision across the locality and countywide in relation to Cognition and Learning and all aspects of Early Identification of SEND
 - Ensure effective collaboration with key stakeholders to build capacity and maximise outcomes for children and young people.
 - Close working with the SEND strategic planning team to drive improvements in Early Identification of SEND, and early specialist intervention when required.
 - Significant contribution to transformational change in provision and services in the locality managing relationships, culture, and people across agencies.
 - Develop and maintain sustainable income generation through traded services in area of specialism.
-
- Ensure regular audit of services take place and that services are compliant with national good practice, guidance, regulations, legislation including Ofsted frameworks.
 - Significant contribution to self-assessment to highlight required improvements in delivery at local level.

Job profile

Strategic management

- Responsibility for the analysis of performance of SEND and Inclusion across the locality area and across the county for Early Identification and Cognition and Learning.
- Lead on the development and implementation of strategic planning for the SEND specialism and ensure that the strategy is kept under ongoing review in accordance with legislative requirements.
- Responsibility for the analysis of performance of SEND statutory KPIs and ensuring further development of practice and quality
- Leadership of one of the Locality Boards to ensure they are effective in working together to improve performance and deliver transformational change.
- Ensure strong oversight of the high needs budget at locality level, working collaboratively with schools and settings to take corrective action as necessary to minimise deficit budgets and to ensure that funding is used effectively to improve outcomes for children and young people.
- Provide strategic direction and support to SENCOs within schools including analysis of professional development needs and the delivery of all phase SENCo networks.
- Ensure professional development needs of education settings and other professionals in the area are identified together with opportunities for needs to be met.
- Contribute to the development of a county wide workforce development framework for SEND and Inclusion.
- Work directly with schools to embed consistent inclusive practices and the early identification and intervention of children and young people with additional needs.
- Provide appropriate support, challenge and escalation to schools causing concern.
- Taking a lead role in establishing team around the school approaches as required.
- To support the creation and development of links with local communities.
- Provide senior manager representation and insight at appropriate meetings.
- Actively seek opportunities for transformation of services and provision to meet needs of children and young people and ensure cost effectiveness.
- To contribute to full compliance with the standards and regulations through analysis of inspections and the development of strategic plans to deliver responsive service change.
- Develop strategic plans for SEND specialism ensuring it reflects inspection recommendations, local need and the Children and Young Peoples plan. This will need to include plans to develop the role of Area Senco in Early Years, and ensure effective support for EY settings and providers in meeting the needs of Children with SEND.
- Create and maintain effective networks with senior professionals across agencies to promote effective working practice and strategic planning, particularly in the area of Early Identification.
- Develop and maintain an effective communication strategy in order to report on service delivery.
- Develop services to ensure they maintain relevance in a changing political context.

Communications

- Significant contribution to the communication strategy at both local and countywide level to ensure stakeholders are fully informed of performance and priorities for SEND and Inclusion.
- Establish strong working relationships and communication with managers of local multi-disciplinary teams across SEND and social care.
- Establish high profile and presence as the lead officer for SEND and Inclusion performance in the locality providing support and challenge as appropriate.

Job profile

- Ensure strong communication framework at locality level for parents/carers and children and young people to ensure feedback influences practice and development of services and provision via the Locality Board.
- In collaboration with the Head of Inclusion, ensure there is an effective flow of information with senior leadership, elected members, health, parents/carers and children and young people.
- Effective co-ordinated communication and support to SENCos and equivalents in early years and post 16 settings.
- Ensure the effective function of the Locality Board.
- Ensure services establish rapport and respectful, trusting relationships with children, young people, their families and carers.
- To ensure there are good communication systems, including that teams are supervised, appraised and effective team meetings/away days take place.
- Ensure critical issues, media interest, complex complaints, FOI's and interest from MP's is dealt with in a timely and appropriate manner.
- Provide high standards of verbal and written communication across all levels including senior professionals, inspectorates, members, parents and local community forums.
- Present information through public speaking at local, regional and national events, ensuring the reputation of the local authority is maintained to a high standard.

Partnership / corporate working

- Lead on the development of strong collaboration and an agreed ethos and culture in localities engaging all stakeholders in priorities for SEND and Inclusion.
- Develop and maintain multi-agency networks, ensuring they keep abreast of strategic developments and priorities in other agencies in a regional, national and political context.
- Ensure interagency collaboration is achieved in order to ensure high aspirations and achievements for children and young people.
- Work closely with parents/carers, children and young people to maximise opportunities for co –production in the transformation of services
- Drive the development of a cohesive training plan equipping staff with the knowledge and resources needed to fulfil their roles.

Job profile

Resource

- Provide clear oversight, management control of financial resources service and management locality based level.
- Contribute to the effective monitoring and evaluation of commissioned provision in the locality on an annual basis.
- Work closely with senior leaders in localities to deploy local SEND commissioning budgets to address priorities for improved performance.
- Contribute to the prudent management of locality based SEND budgets assigned to the locality partnership and commissioned provision.
- To be responsible for the strategic oversight of assigned budgets, complex staffing within the specialism area, ensuring resources are deployed effectively.
- To manage the recruitment, monitoring, appraisal and performance management of staff as necessary.
- To ensure that all staff receive regular effective, reflective supervision and appraisals.
- Significant contribution to the training and induction plan for the SEND specialist team, SENCos, governors to ensure confidence in SEND and Inclusion.
- To lead on the confidence and capacity of local stakeholders to build capacity and resilience in the local area.
- To be concerned for staff welfare, offering support, at times of stress, praising work completed and monitoring performance, including sickness absence.
- Forward plan to ensure resources are effectively managed and risks identified early.
- To support auditors with their work and provide them with the necessary information.
- Ensure effective allocation of Element 2 SEND funding out to EY providers.

Systems and Information

- To ensure compliance with Freedom of Information Requests by collating, analysing, information and releasing appropriate information.
- To collate, analyse and report on performance information to members and senior managers.
- To analyse and present information from performance dashboards for the locality.
- To ensure there are robust effective systems in place that provide suitable evidence to Ofsted in regulatory inspections.
- Ensure effective use of IT systems to review performance, set targets and develop improvement plans.

Safeguarding

- Be responsible for promoting and safeguarding the welfare of children and young people.
- To ensure services are appropriate and sensitive to the needs of children with additional needs.
- Maintain oversight of safeguarding practices in settings across the locality.
- To ensure issues are reported appropriately using the Local Area Designated Officer to advise and ensure the appropriate inspectorate are kept informed.
- Ensure services are safeguarding compliant, making effective use of support services including legal, insurance and HR.

Job profile

Person Specification

Essential upon appointment	Desirable on appointment
Knowledge <ul style="list-style-type: none"> • Knowledge of Legislative framework for SEND • Detailed knowledge of SEND practices and protocols and inclusion in education • Knowledge of current best practice within schools and Early Years settings 	<ul style="list-style-type: none"> • Knowledge of relevant research
<ul style="list-style-type: none"> • Detailed awareness of current national developments in terms of SEND and Inclusion and High Needs funding • Knowledge of performance outcomes for LAs and education settings • Significant level of knowledge and ability to keep up to date in relation to: <ul style="list-style-type: none"> • Early Identification of SEND across needs • Supporting SEND within EYFS • Portage services and approaches to Early Identification • Specific learning disabilities • Developmental delay and moderate learning difficulties • Supporting children with complex learning and developmental needs • Knowledge of regulatory frameworks including Ofsted and CQC • High degree of understanding around the latest research and evidenced based interventions within Cognition and Learning and Early Identification 	
Experience <ul style="list-style-type: none"> • Substantial and relevant experience of working with children and young people in education • Significant experience of collaborative and partnership working across a wide of stakeholders including schools, settings, partner organisations, parent and carers and children and young people • In depth experience of people and budget management • Experience of intra and inter-agency work. • Experience of supervising a range of staff • Experience of effective change management and transformation • Good understanding of government policy process • Experience of analysis of quantitative and qualitative data, report writing and delivery of high quality presentations to a variety of audiences 	<ul style="list-style-type: none"> • Experience of responding to media enquiries. • Experience of working with academic research. • Experience of trading and commercialisation • Experience of providing witness testimony and involvement in SEN Tribunals

Job profile

Occupational Skills <ul style="list-style-type: none"> • Strong performance management with ability to audit and evaluate. • Ability to plan for and implement change effectively to improve services • Planning and project management skills • Ability to demonstrate effective leadership skills and to motivate teams and partnerships • Excellent organisation skills and the ability to organise and prioritise the work of the team effectively to agreed national and local standards. • Ability to work at a strategic level to develop, manage and sustain innovative service approaches. • Ability to horizon scan at a national level to predict policy direction and ensure services are planned ahead of policy implementation • Highly effective communicator able to influence relations with partners • Strong commitment to Anti Discriminatory Practice • Considerable understanding of prudent Budget Management within a context of complex budgets. • Good Presentation skills (written and oral) • Proficient IT skills, e.g. email, word etc. 	<ul style="list-style-type: none"> • Experience of working across different aspects of SEND and Inclusion
Professional Qualifications/Training/Registrations required by law, and/or essential for the performance of the role <ul style="list-style-type: none"> • Degree level qualification 	<ul style="list-style-type: none"> • Professional qualification in area of specialism • Level 5 management qualification or above
Other Requirements <ul style="list-style-type: none"> • To be available and prepared to work evenings and weekends • Ability to meet the travel needs of the post. 	
Behaviours	Link

NB – Assessment criteria for recruitment will be notified separately.

Optional - Statement for recruitment purposes: You should use this information to make the best of your application by identifying some specific pieces of work you may have undertaken in any of these areas. You will be tested in some or all of the skill specific areas over the course of the selection process.